



GAT MONTHLY MEMBERSHIP PROGRESS REPORT

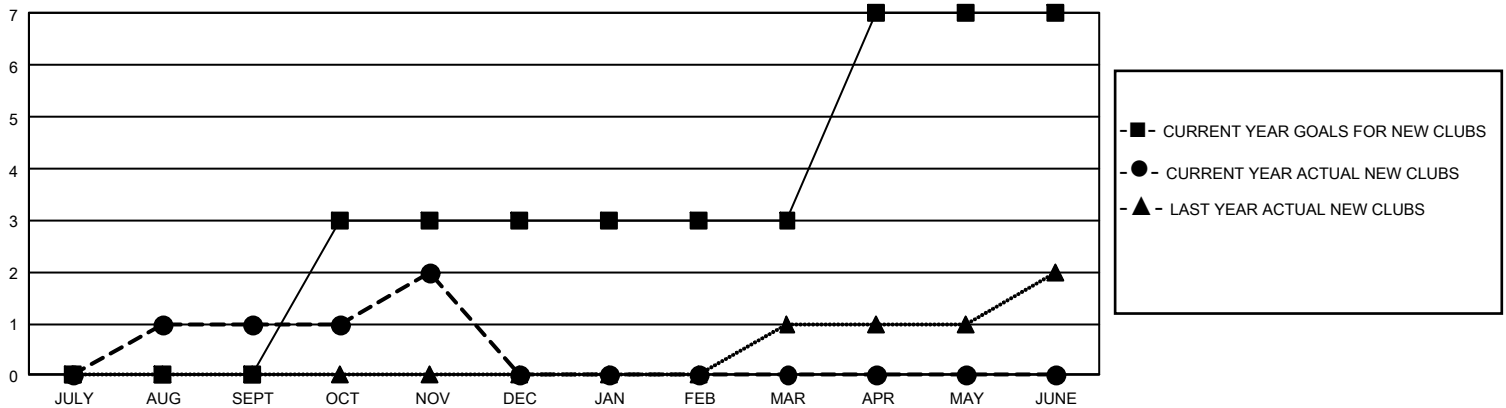
Results as of: 11/30/2025

GMT Constitutional Area 7, Group B

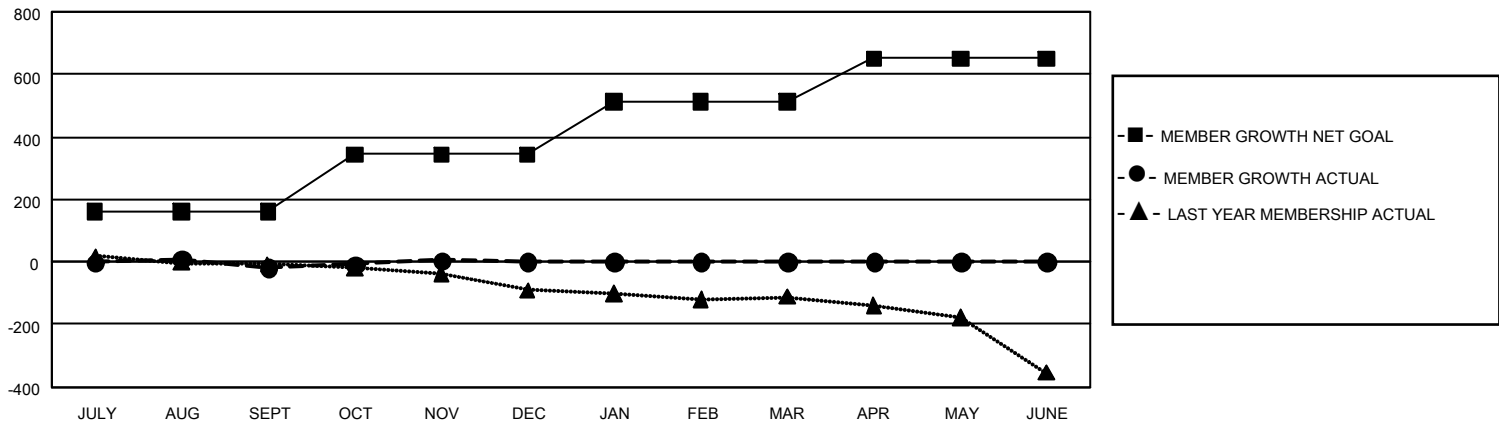
REPORT DOES NOT INCLUDE CLUBS IN UNDISTRICTED AREAS.

Clubs				Members			
RESULTS FOR 2025-2026				RESULTS FOR 2025-2026			
QUARTER	NEW CLUB GOAL	NEW CLUBS	DROPPED CLUBS	QUARTER	MEMBER GROWTH NET GOAL	MEMBER GROWTH ACTUAL	DROPPED MEMBERS ACTUAL (including transfers)
JULY/AUG/SEPT	0	1	4	JULY/AUG/SEPT	162	219	207
OCT/NOV/DEC	9	1	1	OCT/NOV/DEC	182	168	130
JAN/FEB/MAR	0	0	0	JAN/FEB/MAR	168	0	0
APR/MAY/JUNE	12	0	0	APR/MAY/JUNE	139	0	0

GOALS AND ACTUAL NEW CLUBS CUMULATIVE



GOALS AND ACTUAL MEMBERS CUMULATIVE



DROPPED CLUBS: 5

138 CLUBS OF 287 ADDED 1 OR MORE NEW MEMBERS

GENDER DISTRIBUTION

MALE	4,888 (65.80%)
FEMALE	2,537 (34.15%)
NON BINARY	2 (0.03%)
PREFER NOT TO ANSWER	2 (0.03%)

DROPPED MEMBERS

DECEASED	52
CLUB CANCELLED	2
OTHER	283
TOTAL	337

[CLICK HERE FOR CUMULATIVE MEMBERSHIP DATA](#)

TOTAL FAMILY UNIT MEMBERS 769

FAMILY MEMBERS PAYING HALF DUES 387